



**CITY OF CAPE TOWN
ISIXEKO SASEKAPA
STAD KAAPSTAD**

INFORMATION STATEMENT

PROPOSED LEASE OF A PORTION OF ERF 2672 CONSTANTIA, 22 KLEIN CONSTANTIA ROAD FOR A 15 METER FREESTANDING TELECOMMUNICATION BASE STATION: RICH REWARDS LEASING (PTY) LTD

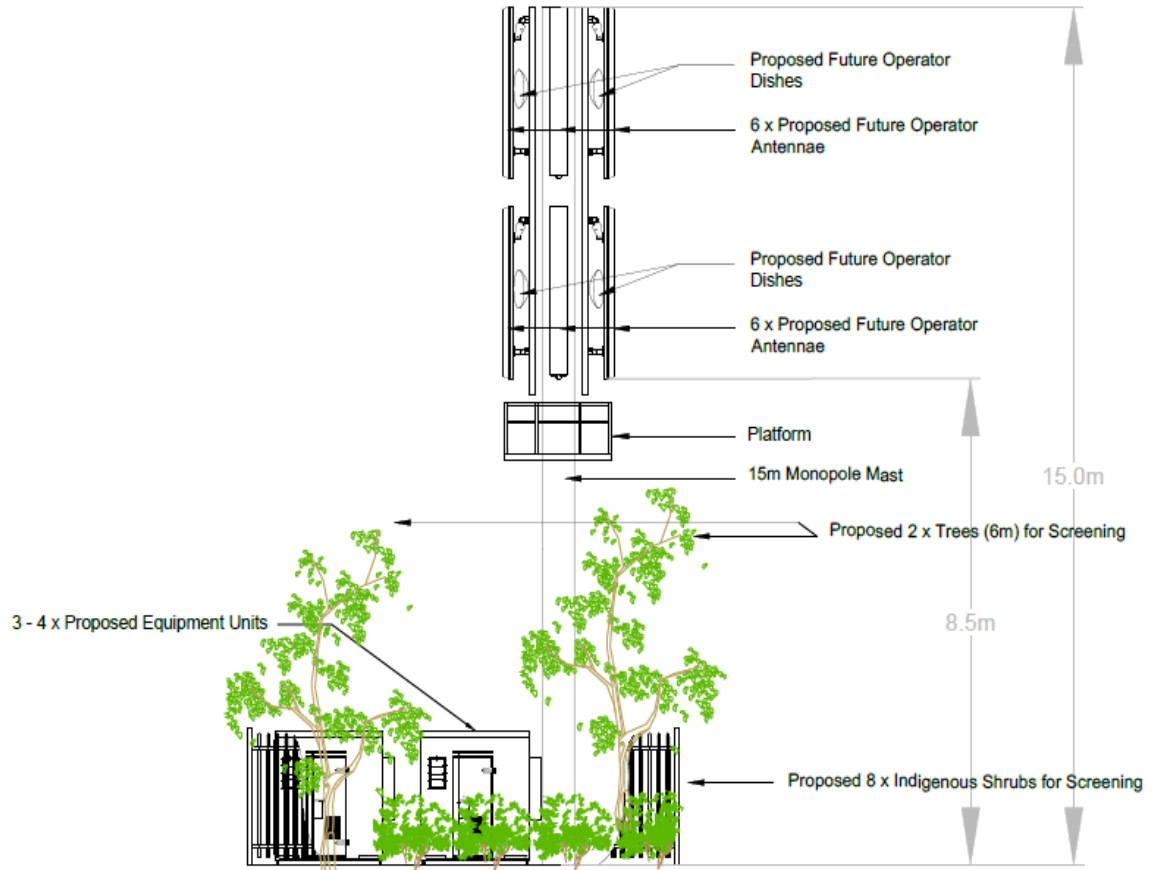
- a) Reason: a small portion (of $\pm 67.02\text{m}^2$) is required for the installation of Telecommunication Infrastructure.
- b) Expected benefit: it will provide improved and uninterrupted telecommunication services (for wireless/LTE connectivity);
- c) Expected proceeds: that the City will receive a market related rental of R18 350, 86 for the proposed lease for Telecommunication Infrastructure purposes;
- d) Expected gain or loss: no loss will be incurred by the City arising from the granting of right; only gaining improved and uninterrupted telecommunication services.
- e) The proposed transaction included a call for alternative proposals for the same intended usage. The call for alternatives is not limited to a single bidder. This should include the proposed rental, visual impact, landscaping and public amenity.

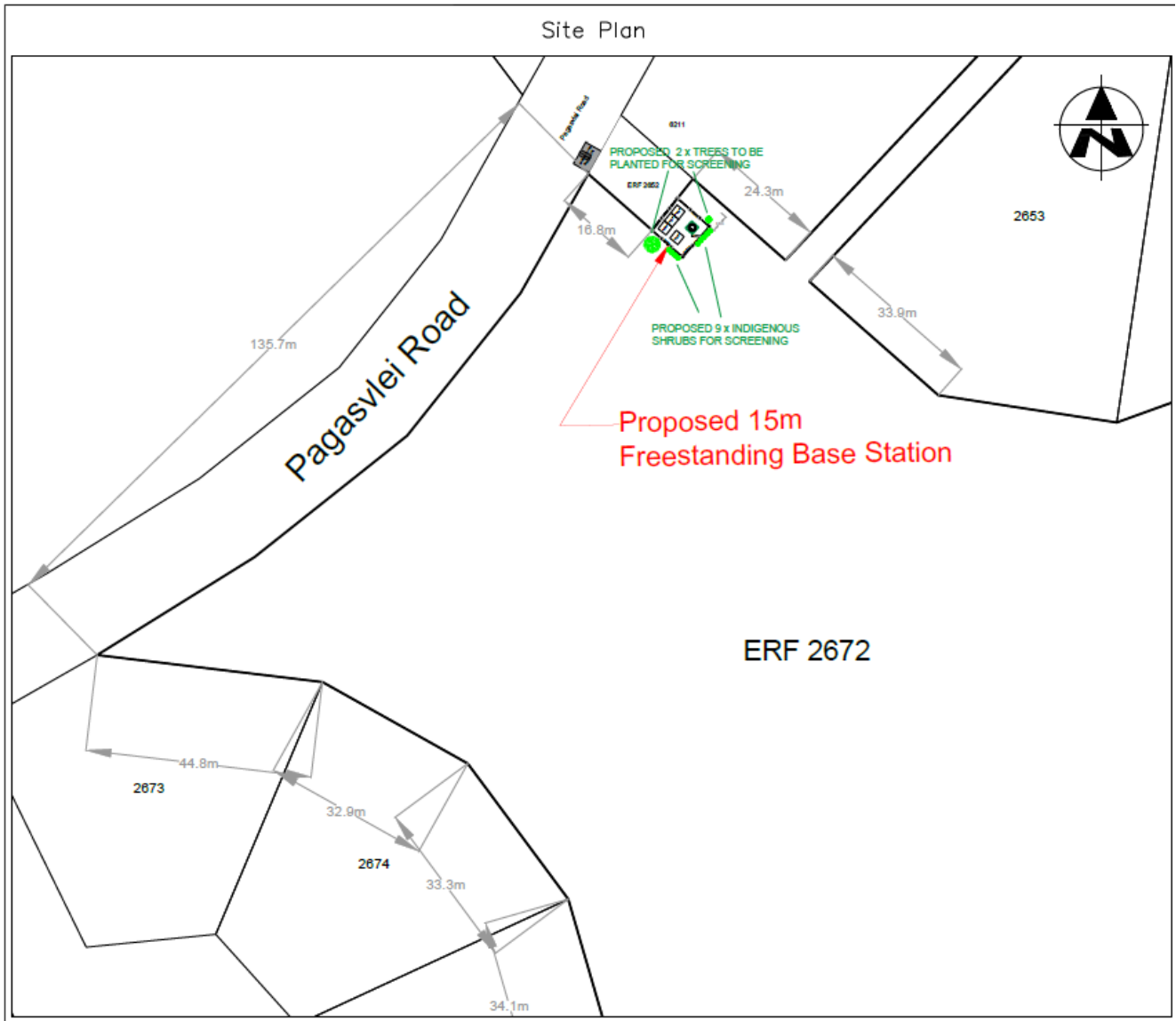


Elevation

NOTE:

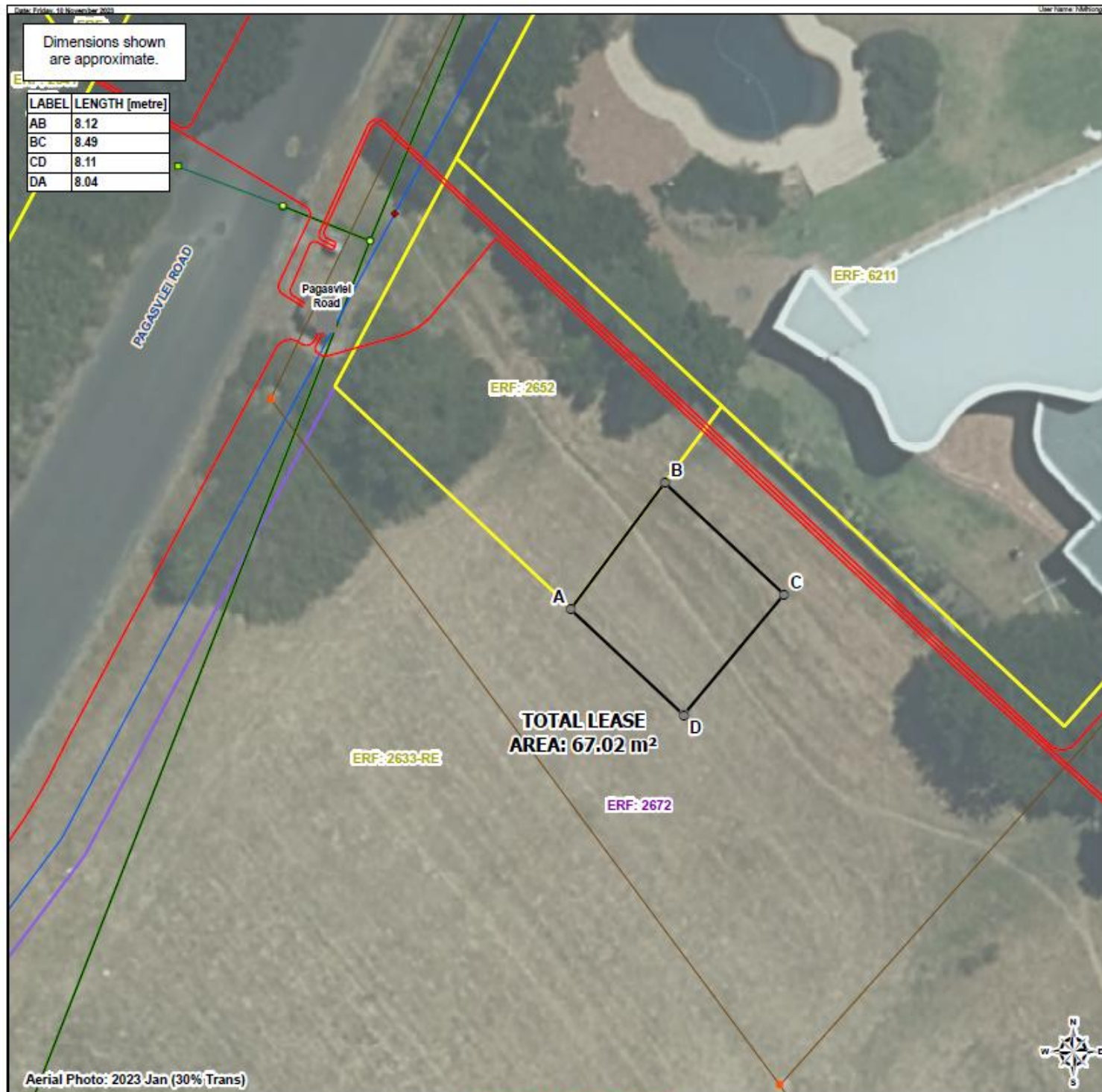
Advisory or warning signage including a pictogram may be a requirement for TMI. Such signage shall identify the property and the TMI and shall warn the general public as required. Such signage shall be to the City's satisfaction and may not be larger than 400mm x 500mm.





Dimensions shown
are approximate.

LABEL	LENGTH [metre]
AB	8.12
BC	8.49
CD	8.11
DA	8.04



Aerial Photo: 2023 Jan (30% Trans)

PROPERTY LEASE OUT

PORTION OF CONSTANTIA ERF 2672

22B KLEIN CONSTANTIA ROAD, CONSTANTIA



Legend

Survey Title Points

- Non-Surveyed
- ▭ LEASE AREA
- Elec - Substations
- ~ Elec - Underground Cables
- ♦ Water - Hydrants Reticulation
- ~ Water - Mains Reticulation
- Sewer - Manholes

~ Sewer - Mains Reticulation

Stormwater Junction

- STW - Manhole
- Catchpit

Stormwater Conduit

- ~ STW - Pipe
- ~ STW Connection

Property

- ▭ Confirmed
- ▭ SG Approved
- ▭ Registered

Notes:

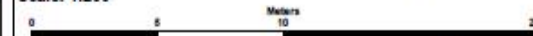
Application for a Telecommunication Lease

1) The figure ABCD represents unregistered confirmed ERF 2672 CONSTANTIA, LAND PARCEL KEY 379718, Zoning Scheme: Open Space 2: Public Open Space in extent of approximately 67.02 m², a portion of a registered remainder of ERF 2633 CONSTANTIA, LAND PARCEL KEY 231221, Zoning Scheme: Open Space 2: Public Open Space and Transport 2: Public Road and Public Parking owned by VLAKWATER PLAAS PTY LTD and vests in the CITY OF CAPE TOWN as a Public Place.

2) Title Deed No. T 17966/1972.

Ward Number: 62, Subcouncil: 20

Scale: 1:200



Drawn By: NOSIHLE MHLONGO
Email: Noshile.Mhlongo@capetown.gov.za

Telephone: +27 (0) 21 400 2348
Date: Friday, 10 November 2023



CITY OF CAPE TOWN
ISIZIKO SAKSOKA
STAD KAAPSTAD

City Of Cape Town Metropolitan Municipality
Property Management: GIS and Surveys
Civic Center
Cape Town
8001

Tel: +27 (0) 21 400 2225
Email: mshvudu.mshvudu@capetown.gov.za

Project Manager: Gary Dammert

Email: Gary.Dammert@capetown.gov.za

Plan Number: LIS3091

Case No:

Disclaimer:
City of Cape Town accepts no responsibility for the accuracy or completeness of the data presented on this map and will not be held liable for damages, including loss of profits or consequential damages, arising out of the use of this information.

Please note this is an A3 map.
To view the map print out in scale it must be printed on an A3 page.